

HUMAN-LARGE CARNIVORE CONFLICTS IN WYOMING



2014



CONFLICTS

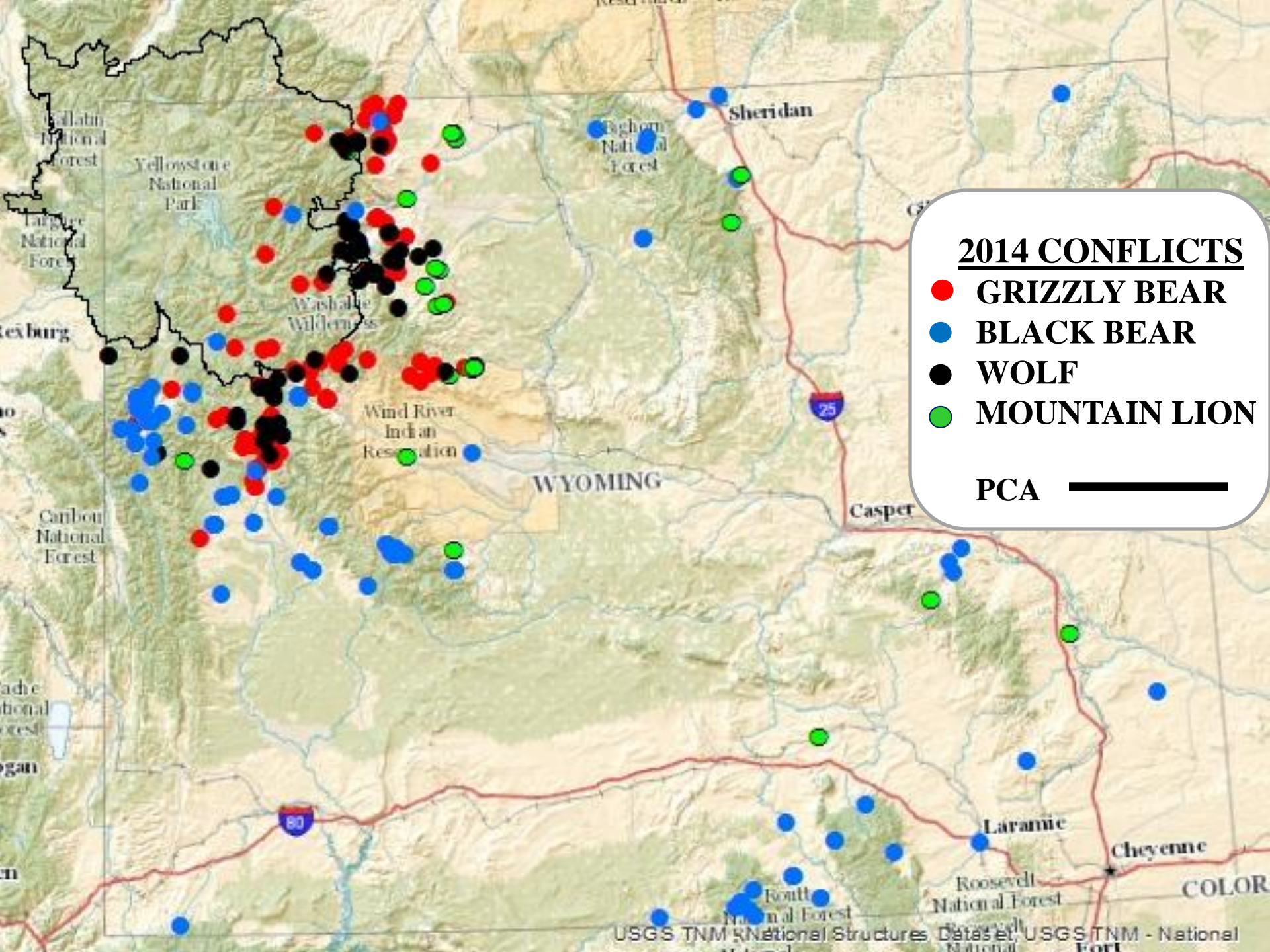


Defined as: **Interactions between humans and large carnivores that result in property damage, agriculture damage, animal or human death or injury (short version).**

2014 Statewide Human-Large Carnivore Conflicts

N = 385

REGION	GRIZZLY BEAR	BLACK BEAR	MTN. LION	WOLF	TOTAL
Jackson	10	45	1	8	64
Cody	60	7	15	37	119
Pinedale	73	24		9	106
Lander	21	24	2	10	57
Casper		3	1		4
Sheridan		11	2		13
Green River		8			8
Laramie		12	2		14
Totals	164	134	23	64	385



GRIZZLY BEAR CONFLICTS

N = 164

Livestock/Pets/Animals = 130

Human Foods = 10

Unusual Aggression = 7

Property Damage = 4

Pet-Livestock Feed = 4

Fruit Trees = 3

Garbage = 2

Human Injury = 2

Apiary Damage = 1

Human Death = 1



Grizzly Bear Management Actions



Captures = 23 (22 bears)

Relocations = 16

Removals = 6

Released on site = 1

MANAGEMENT REMOVALS = 6
NATURAL = 1
ROAD KILL = 1
UNDER INVESTIGATION = 5



GRIZZLY BEAR MORTALITIES
N = 13

Black Bear Conflicts

Total Conflicts = 134

Garbage = 42

Human Foods = 41

Property Damage = 24

Beehive Damage = 8

Sheep Depredations = 8

Pet-Guard Animal = 6

Fruit Trees = 4

Horse = 1



Black Bear Management Actions



Captures = 22

Relocations = 14

Removals = 8

Mountain Lion Conflicts/Encounters

N = 23



Livestock Depredations = 14

Pets = 7

Unusual Encounters/Aggression = 2

Mountain Lion Management Actions

Captures = 6

In Town = 3

Cattle = 2

Sheep = 1



Removed 3 and Relocated 3

Wolf Conflicts (*Trophy Game Area*)

N = 64



Cattle = 59

Sheep = 3

Road Kill = 1

Horse = 1

Wolf Management Actions/Mortality

Management Removals = 13

Lethal Take = 11

Defense of Property = 1

USFWS = 6

Monitoring Captures ~ 51

(prior to relisting)

Other - Road Kill = 1



Large Carnivore Damage Paid FY13

Total ~ \$567,000

Grizzly bear ~
\$284,000

Black bear ~
\$55,000

Mountain lion ~
\$57,000

Wolf ~ \$171,000



Trends & Issues



Roadside Grizzly Bears



Family groups in
subdivisions,
developed areas, and
depredation sites



**Jackson Area
Black Bears**

Mountain Lions in Town





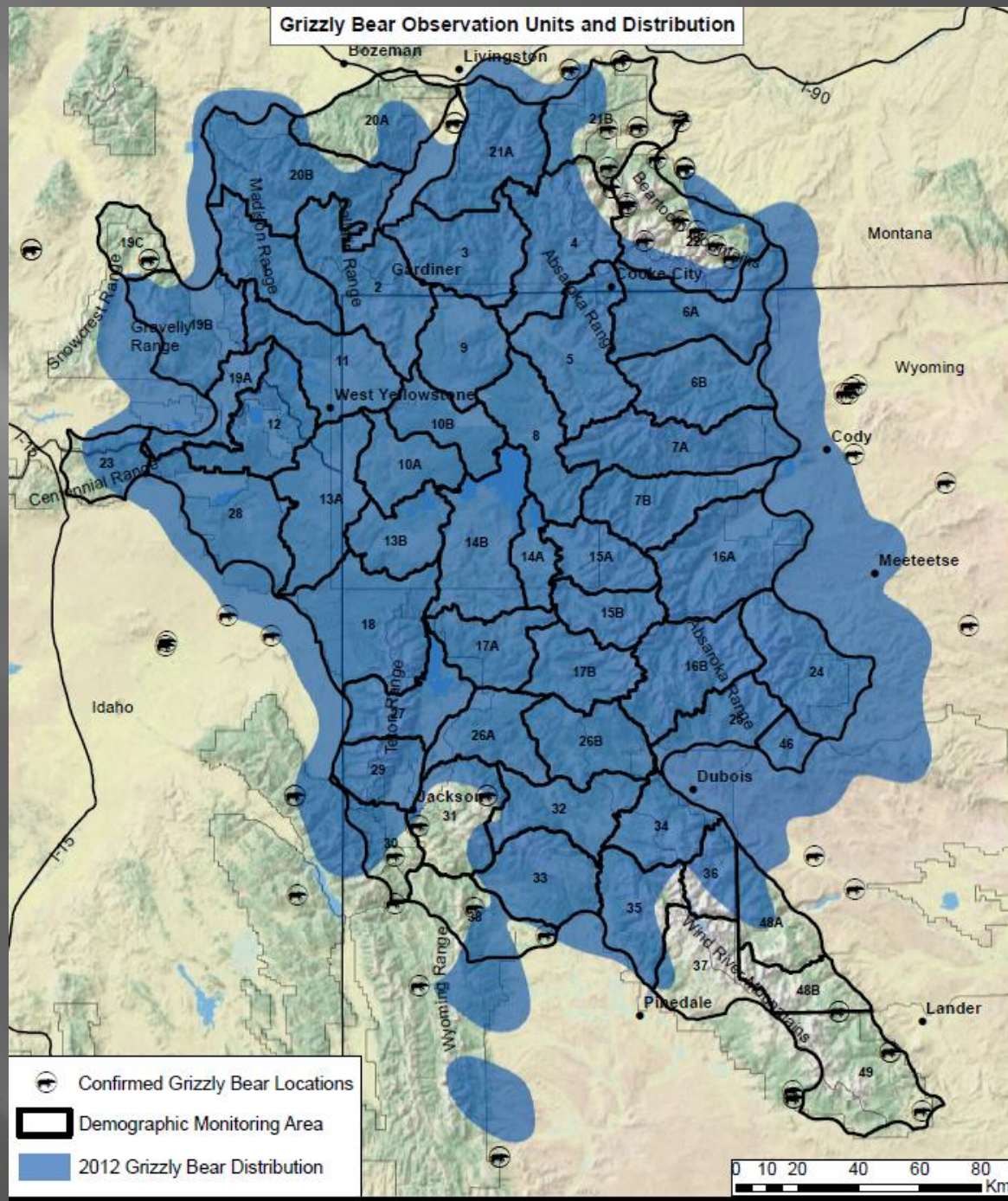
**Grizzly bear expansion into
new areas**

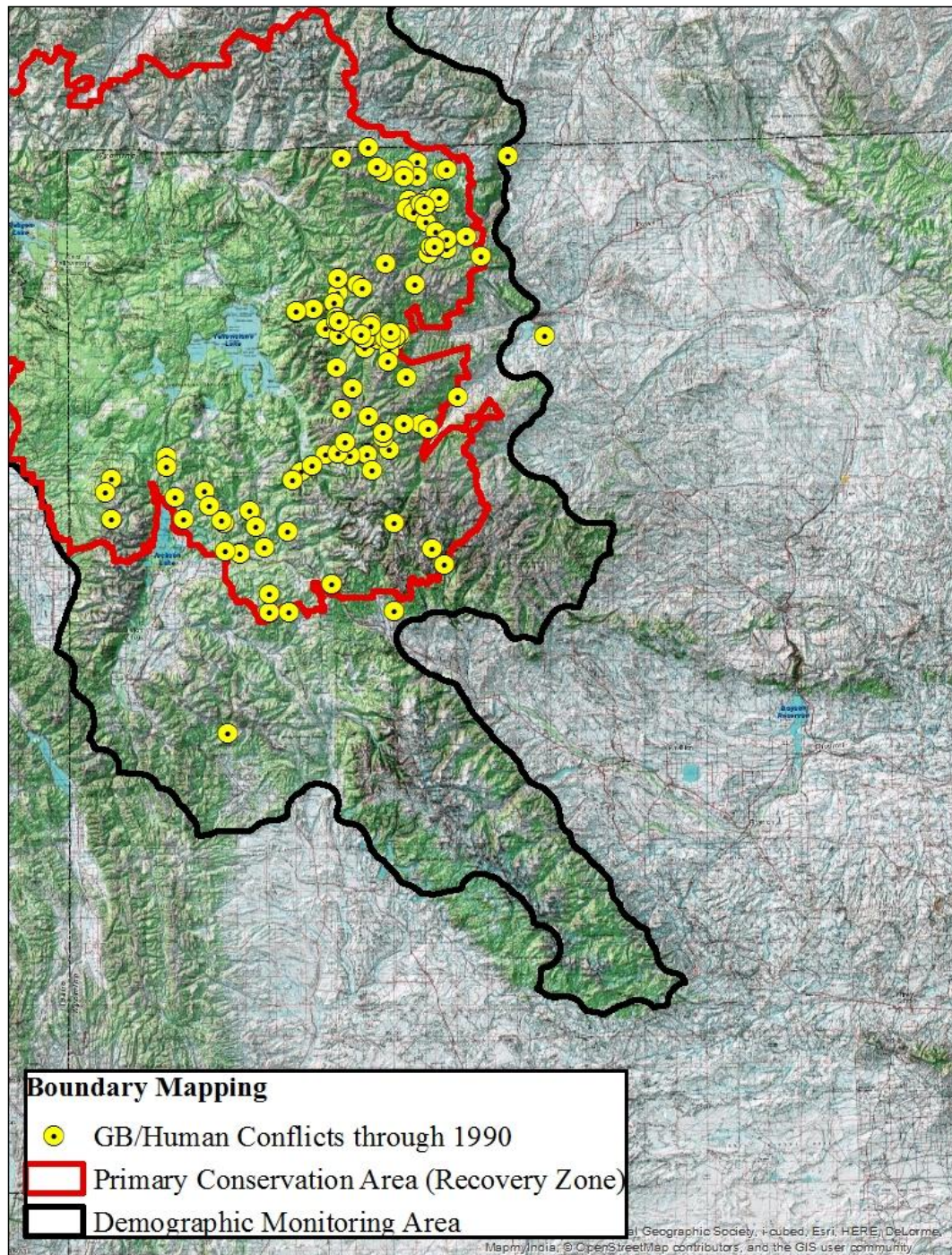


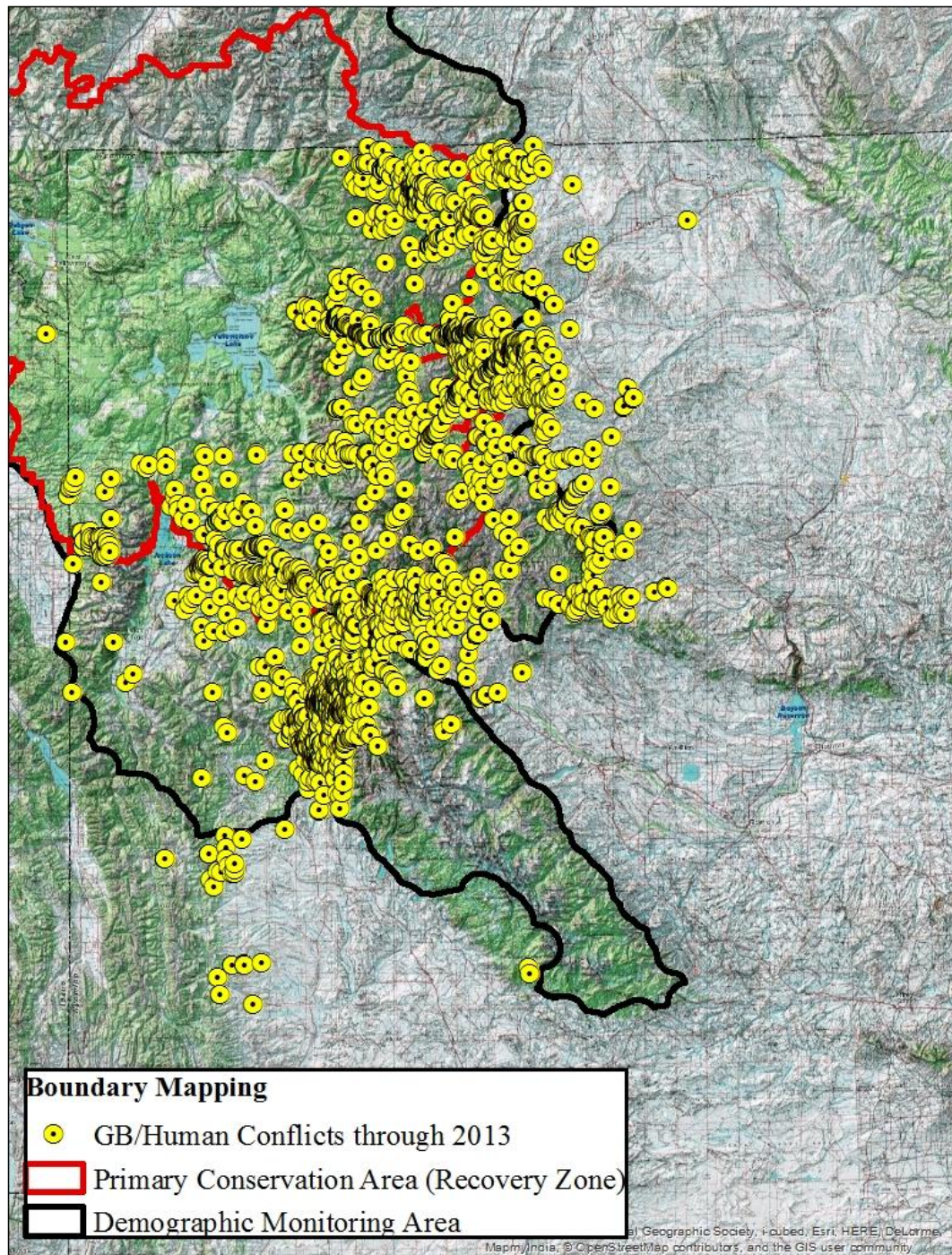
**Southern Winds
Wyoming Range
Bighorn Basin
Jackson Hole
Clark**



Grizzly Bear Expansion







Success and Conflict

With successful recovery comes increased opportunity for human/grizzly bear interactions





**Aggressive and/or habituated
grizzly bears on livestock and
harvested big game carcasses**

2014 Outreach



- Grizzly delisting proposal
- Fremont Co. sanitation program
- Electric fencing of outfitter camps
- PSAs and newspaper inserts
- Many permanent electric fences (orchards)
- Pinedale Rendezvous Days
- Statewide living in bear, lion, and wolf country workshops, school programs, local community groups
- Host or participate in local, national, international workshops and training



Interactive Bear Education Display on Tour



Filming
of
Brutus



Park County Carcass Management Program



**101 carcasses
removed in 2014**

**686 carcasses
removed since
inception of program**

**Funds provided by: ADMB, Park County
Predator Board, WY Bear Hunters
Association, Park County Commission**

Lander/Dubois Sanitation Program



Large Carnivore Conflict Management

- Statewide involvement – all regions
- Large Carnivore Section

Dan Thompson

Supervisor

Brian DeBolt
Conflict Coordinator

Zach Turnbull
Mike Boyce
Luke Ellsbury
***Kyle Bales**
***Zach Gregory**
***Jason Wilmot**

Bob Trebelcock

Dan Bjornlie

Ken Mills

Justin Clapp

***Colby Clark**

***Clint Atkinson**

***Anders Johnson**

***Dusty Lasseter**

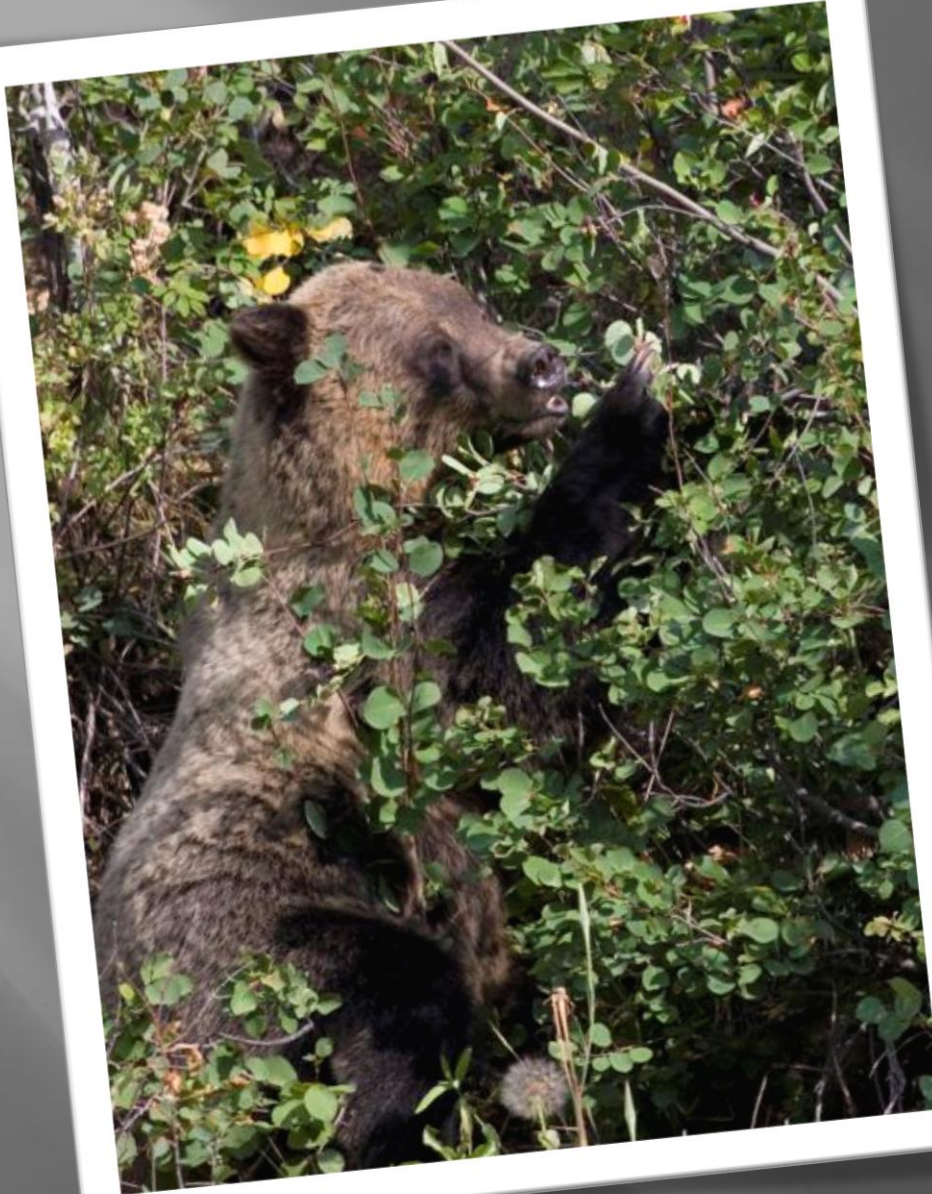
Bearwise Coordinator

Program Outcomes

- Education efforts
- Voluntary attractant storage
- Required garbage storage (municipal and public land)



- Targeted removal of offending animals
- Good working relationships with partner agencies and constituents



**Good natural food
year is key
in large carnivore
conflict
management**

QUESTIONS?

